

NYAYA HEALTH NEPAL



possible



PRE-FABRICATED HEALTH FACILITIES
CONSTRUCTION IN DOLAKHA
UPDATE REPORT 5
JANUARY–FEBRUARY 2016

BACKGROUND/CONTEXT:

Following the devastating earthquake, Nyaya Health Nepal, based on the needs assessed by the Ministry of Health (MoH), signed a Memorandum of Understanding (MoU) with the Ministry of Health (MoH) for the construction of twenty one Type-2 pre-fabricated Health Posts (HPs) in Dolakha District. This mandate was to cover the immediate need of reconstructing the health facilities destroyed during April/May earthquake in Nepal.

JANUARY-FEBRUARY UPDATES:

HIGHLIGHTS:

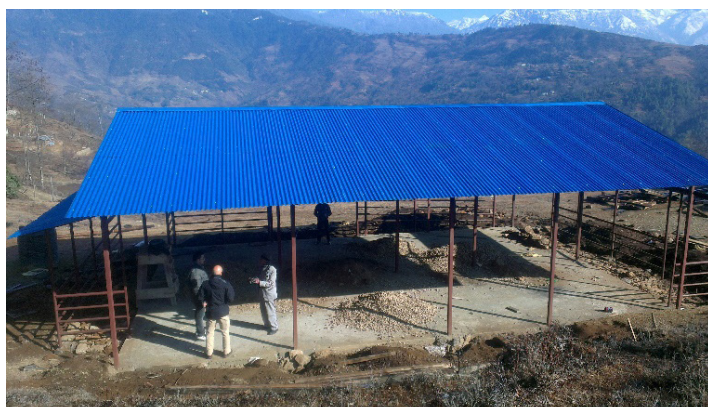
- Nyaya Health Nepal's rebuilding team has reached to 20/21 sites
- Boch HP has been completed and is scheduled to be inaugurated on March 3
- Rebuilding work is going on in 10/21 sites

RECONSTRUCTION UPDATES:

1. **Boch HP:** Prefab rebuilding has been completed. Work in the last two months included truss work completion, prefab material installation, sanitary and electrical work completion, solar water heater installation as well as solar electricity installation.
Inauguration for the newly build health post is planned for the first week of March.
2. **Mali HP:** Foundation work, including soling and DPC, has been completed. Posts have been placed. Truss work (roofing) has also been completed.
Prefab unit was transported to the site and pre-fab material installation is also going on.



THE NEWLY CONSTRUCTED BOCH HP BUILDING



MALI HP AFTER TRUSS WORK AND ROOFING



ONGOING PREFAB INSTALLATION IN MALI HP

3. **Lakuridanda HP:** Posts placement has been completed. Truss work (roofing) is going on. Prefab set has been transported to the site. Prefab material installation will start early March and will be completed in the same month.

4. **Lapilang HP:** Foundation work, including soling and DPC, has been completed. Posts have been placed. Retaining wall is being built. Roofing work will be started next.
5. **Hawa HP:** Foundation work, including soling and DPC, has been completed. Roofing work has been completed. Railing work has also been completed. Prefab material installation will be started by mid-March.
6. **Sahare HP:** Foundation work, including soling and DPC, has been completed. Railing work has been completed. Septic tank has been constructed. Prefab material installation will get started in March.
7. **Katakuti HP:** Foundation work, including soling and DPC, has been completed. Posts have been placed. Truss work (roofing) is scheduled to be started by mid-March.
8. **Bhusafeda HP:** Foundation work, including soling and DPC, has been completed. Posts have been placed. Truss work (roofing) is scheduled to be started in March.
9. **Jhule HP:** Foundation work, including soling and DPC, has been completed. Truss and roofing work is scheduled to get started by mid-March.
10. **Dandakharka HP:** Construction supplies including cement, pebbles, sand and rod, have been taken to the site. Site land levelling is going on.
11. **Namdu HP:** Site clearance and levelling has been completed. Masonry wall construction has been completed. Posts have been placed and tie-beam work has been completed.
- 12–13. **Japhe HP & Jhyaku HP:** Land issue has been resolved. Rebuilding work will get started in March.
- 14–20. **Bhirkot, Japhe, Chyama, Ghyangsukathokar, Lamidanda, Marbu, Alampu HP:** These Health posts are yet to finalize land for rebuilding work. Consultation with the DHO is ongoing to address the issues.
21. **Khare HP:** Nyaya Health Nepal team is yet to reach the site owing to road accessibility issue. The rebuilding team is planning to reach the site in March.



BHUSAFEDA HP JUST BEFORE THE PLACEMENT OF POSTS



NAMDU HP AFTER THE PLACEMENT OF POSTS

MEETINGS AND CONSULTATION:

Nyaya Health Nepal has been meeting officials from District Administrative Office (DAO), District Development Committee (DDC), and District Health Office (DHO) for consultation on a regular basis, and has been working in close coordination with District Health Office. We plan to have regular structured meetings with all the associated authorities going forward.

CHALLENGES

The major challenges are listed as follows:

- Land issue: Land for pre-fab construction has not been finalized in seven health posts: viz. Bhirkot, Japhe, Chyama, Ghyangasukathokar, Lamidanda, Marbu, Alampu HP. This has kept work on hold in these sites.
- Fuel shortage: Ongoing fuel shortage led into compromising transportation, managing required supplies, import of pre-fab material, and construction timeline. Improvement in the situation was realized in February.

NEXT STEPS FOR MARCH:

- Accelerate the reconstruction efforts in the ten current sites
- Start the work in two ready-to-go sites- Japhe HP and Jhyaku HP.
- Go to Khare HP and potentially start the work.
- Work closely with the District Health Office to figure out a way ahead on the seven health posts with land issues.